

# Services & Packages

---



## Wedding/Large party package

Total Capacity: *Banquet Theater Standing*  
This package includes the rental of the Sanctuary, Social hall, Kitchen, Chapel, and room One. This package comes with free ramp removal if you so choose.

1 hour, \$200/hour **\$200**



## Sanctuary, Social Hall & Kitchen

Dimensions: 57x66/3762  
Capacity: *Theater 380 Banquet 300 Standing 500*

1 hour, \$145/hour **\$145**



## Sanctuary

Dimensions: 51x52/2652sq. ft *with stage*  
Capacity: *Theater 260 Banquet 220 Standing 350*  
65x52/3380sq ft. *without stage.*

The largest of our rentable rooms boasts several skylights as well as dimmable hanging and recessed lights for any event mood. In wall speaker system as well as a drop down projector screen, directly attached to the Social hall and they can be separated using a hidden dividing wall.

1 hour, \$80/hour **\$80**



## Social Hall

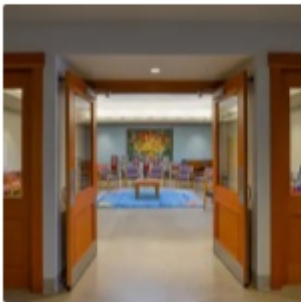
Dimensions: 34x34/1156sq. ft

Capacity: Theater 120 Banquet 100 Standing 150

*the Social hall is directly attached to the Sanctuary and they can be separated using a hidden dividing wall. the social hall has many of the same features, such as skylights for natural/dimmable lighting, recessed wall speakers connected to our sound booth and large side and main entryway doors for easy setup/ take down of events.*

1 hour, \$60/hour

**\$60**



## Chapel

Dimensions: 24x24/576sq. ft

Capacity: Theater 55 Banquet 55 Standing 55

The chapel is a well lit room great for any small to medium group meetings or classes and houses one of our two pianos.

1 hour, \$45/hour

**\$45**



## Kitchen

### Kitchen Facility

Prep Tables

cooking utensils

Oven, Stove/Hood

3 Compartment Sink and Dishwasher

Vegetable Prep Sink

Refrigerator

Freezer

Storage upon request

*Minimum use 4 hours in two week period*

*Users should allow minimum 30 minutes for cleaning and sanitizing.*

*(cleaning supplies provided.)*

**Unavailable Mon-Fri (8:00-3:00) due to long term rental.**

1 hour, \$20/hour

**\$20**



## Room One

17x17/289sq. ft  
Capacity: *Theater 10-15*

1 hour, \$20/hour **\$20**



## Room Three

Room three is primarily a childcare room but has a large area and would be good for many small group events.

1 hour, \$15/hour **\$15**



## Room Four

Capacity: *Theater*  
The main use of this room is as a nursery/ young childcare area, hosting several young children's toys partially foam covered floor and plenty of seating for tired parents.

1 hour, \$15/hour **\$15**



## Room Five

18x25/450sq. ft  
Capacity: *Theater 10-20 Standing 30*

Room Five is a great room for meetings, small classes, trainings, workshops or any other small group events, similar to rooms six and seven.

**Unavailable Mon-Fri (8:00-3:00) due to long term rental.**

1 hour, \$15/hour **\$15**



## Room Six

24x28/672sq. ft

Capacity: *Theater* 20-30 *Standing* 40

room Six is the most spacious a great room for any small group meeting format similar to room Five and Seven.

**Unavailable Mon-Fri (8:00-3:00) due to long term rental.**

1 hour, \$20/hour **\$20**



## Room Seven

20x28/560sq. ft

Capacity: *Theater* 20-30 *Standing* 40

room Seven is a great room for meetings, small classes, trainings, workshops or any other small group events, similar to room Six and Five.

**Unavailable Mon-Fri (8:00-3:00) due to long term rental.**

1 hour, \$20/hour **\$20**

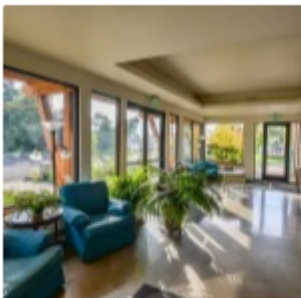


## South Foyer

Capacity: *Theater* 10-15

Limited privacy-room has large glass doors. limited seating arrangements due to multiple fire exits that must remain clear.

1 hour, \$15/hour **\$15**



## East Foyer

Capacity: *Theater* 15-20

Limited privacy-room has large glass doors. limited seating arrangements due to multiple fire exits that must remain clear.

1 hour, \$15/hour **\$15**



## Playground

Requires a playground supervisor provided by renters; renters may not use playground unless specifically stated in the contract.

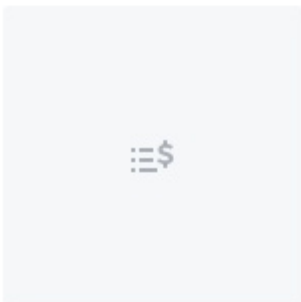
1 hour, \$15/hour **\$15**



## Basic PA System

two (2) portable PA speakers with up to two (2) wired mics

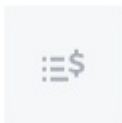
1 day, \$50/day **\$50**



## A/V Technician

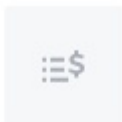
Required if Using UUCE sound system and event A/V needs exceed basic microphone set-up (i.e. slideshow, music, multiplatform events/streaming). Rental Admin will determine when needed.

1 hour, \$35/hour **\$35**



## A/V Consult

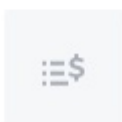
Quantity: 1 **\$50**



## Presentation Sound set-up

Full house speaker system and two (2) wireless mic's with stand's

day(s), \$75/day **\$0**



## Projector/slideshow presentation



projector and screen usage plus Full house speaker system and two (2) wired or wireless mic's with stand's

*\*Projector only available in Sanctuary.*

*\*Microphones available in Sanctuary or social hall only.*

day(s), \$150/day **\$0**



### Slideshow / Order of service creation

Our A/V admin will create a slideshow or order of service for your event with information you provide during our event consult.

Quantity:  **\$0**



### extra microphone

we have a selection of different types of microphones (handheld, lapel, standing, headset etc.)

Quantity:  **\$0**

Total: **\$85**



### T.V. and Zoom Portal

Large screen TV with HDMI outputs and Portal streaming camera.

*\*Discounts provided for support groups.*

1 day, \$25/day **\$25**



### Piano use

must be approved by UUCE Music Director

*\*Two Pianos available*

1 day, \$25/day **\$25**



## Minister

Our minister Reverend Jennifer Youngsun Ryu officiates all Weddings, Funerals or other Rights of passage held at UUCE. This service starts at \$350 and has a variable range depending on amount of time spent as well as any travel for the Minister.

*\*current IRS mileage allowance if applicable.*

*\*eligible for reduced fees at descreation of Minister/ Rental Admin.*

Quantity: 1

**\$350**